

Association for FACILITIES ENGINEERING®

Rochester Chapter No. 21

Dear Prospective Member,

With this letter and the enclosed information, I would like to introduce you to the Association for Facilities Engineering and our local Chapter No. 21. Considering your current career in the facilities industry, I believe our organization can provide you excellent value in its membership. Now let's get into some of the reasons for joining us.

AFE, started in 1954, is the largest professional organization devoted exclusively to the global field of facilities engineering management. We provide the forum that brings our members in contact with top industry experts for exchange of ideas and cutting edge information. As an AFE member you will be perfectly positioned to learn, lead, and influence the future of the facilities engineering profession. Some of the key reasons to become an AFE member include:

1. **AFE's Facilities Engineering Journal** (published bi-monthly and free to all AFE members)
2. **Top Rated Educational Events** (offered at AFE annual Facilities America Exposition)
3. **Networking and Contacts** (at local, regional and national events hosted by AFE chapters)
4. **Professional Development** (AFE's Certified Plant Engineer and Maintenance Manager programs –CPE and CPMM – along with recognition awards for innovative cost-saving solutions)
5. **AFE Membership Resource Directory** (computer-based directory)
6. **References and Publications** (available via Internet Web site www.afe.org)
7. **Money Savings** (discounts on publications, conferences, insurance, car rental, etc)
8. **Resume Database Service** (AFE's CareerNet using the Internet and AFE's newsletter)
9. **Facility Tours** (local plant tours at each monthly meeting to see how your colleagues are doing)
10. **AFE Partners in Education** (continuing education programs through local colleges)
11. **Access to Valuable Research** (data from AFE commissioned research projects)
12. **Local Business Advertising Directory** (monthly newsletter supplement of local engineering, material and service organizations)

Preparation for the future, whether by enhancing our current employment capabilities or planning for advancement and possible career moves, has never been more imperative than in today's economy. As we learn more, expand our knowledge of, and contacts in the facilities industry, we will position ourselves to optimize our value as professionals. I honestly believe that joining AFE and actively participating in our local chapter's activities will enable you in your career plans.

I have enclosed an AFE membership application along with other information about our chapter to get you started. If you are interested in joining, please mail the completed application to AFE national headquarters or join on-line at AFE.org. Thank you for your time and consideration. **I am looking forward to hearing from you!**

Sincerely,

Joe Graves
Membership
AFE Rochester Chapter No. 21
Joe_graves@rmsc.org
585-271-4320

Encl:

AFE Association for **FACILITIES ENGINEERING®**

ROCHESTER CHAPTER NO. 21

The Rochester chapter of the Association for Facilities Engineering (AFE), formerly the American Institute of Plant Engineers, is a non-profit, dynamic organization dedicated to the advancement of facilities management, engineering maintenance and operation.

This chapter is one of 144 chapters across the US and has over 100 members representing both small and large organizations, including industrial, medical, educational, and commercial sectors as well as consulting engineers, architects, contractors and suppliers. Because of this diverse membership, we have created a strong network of professionals that far exceed their counterparts in any other organization. AFE also has a home page in the Work Wide Web [<http://www.afe.org>] for additional news, announcements, job postings and produce listings.

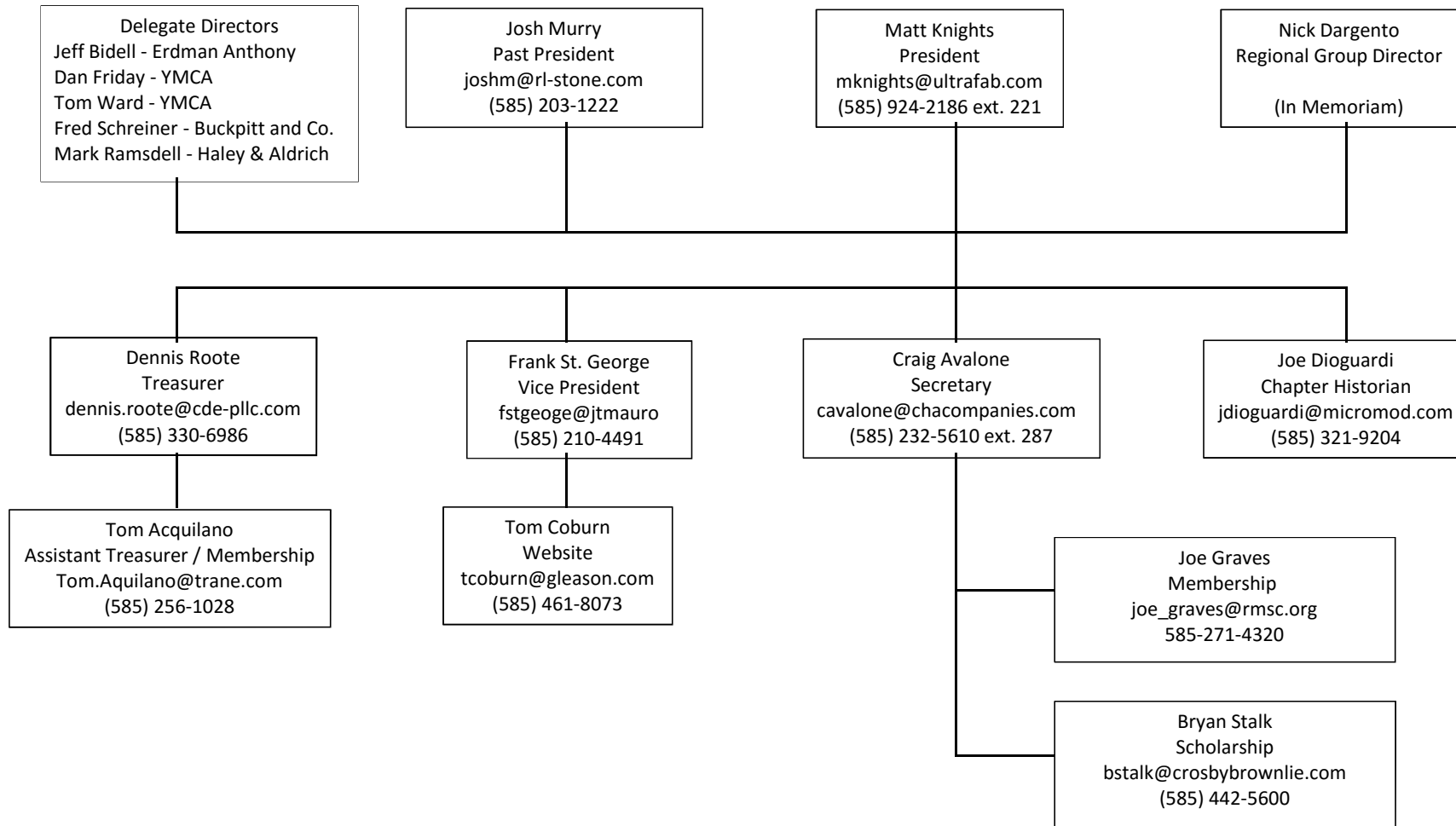
Our chapter and its' members are dedicated to the advancement of the profession which includes promotion of the Certified Plant Engineer (CPE), Certified Plant Maintenance Manager (CPMM) designation, granting scholarships each year to deserving local engineering students and participating in facility related events within the local community.

We meet on the third Wednesday each month from September through June. Approximately 25-40 people attend these meetings which are held at area restaurants immediately following a guided tour of a local facility of interest to the group. In addition guest speakers are featured during the dinner presenting topics of particular interest and importance to the membership.

Any questions should be directed to Joe Graves, Membership Chair of the Rochester Chapter at (585) 271-4320 / joe_graves@rmisc.org.

AFE Association for **FACILITIES ENGINEERING®**

ROCHESTER CHAPTER NO. 21



MEMBER EMPLOYERS

ABR Wholesalers, Inc.
Anthony J. Costello and Son Development
Aramark
Barton & Loguidice
Buckpitt & Company, Inc.
C&S Crane and Rigging, Inc.
C.A. Reed Associates, Inc.
Canandaigua Wine Company, Inc.
CDE Engineering and Environmental, PLLC
CHA Inc.
Cogenic, LLC
ConMed Corp.
Constellation New Energy
Crosby-Brownlie Inc.
Day Automation Systems Inc.
Diocese of Rochester
E. M. Cahill Co., Inc.
EDS Mechanical Services
Elmer W. Davis Inc.
Erdman Anthony
Frank P. Langley Co.
Garlock Sealing Technologies
Gettine Sourcing LLC
Gleason Works
Guardian
Haley & Aldrich of New York
High Falls Brewing Co., LLC
Honeywell Inc.
Hunt Engineers, Architects & Land Surv.
Indoor Air Professionals
JT Mauro Co.
JWR Engineering Inc.
LiDestri Foods
Mis of America
Monroe Community College
Monroe Piping and Sheet Metal, LLC
MR Rooter Plumbing
O'Connell Electric
Ortho-Clinical Diagnostics, Inc.
Pathfinder Engineers, LLP
R. Kraft, Inc.
R.L. Kistler, Inc.
R.L. Stone Co., Inc
R.P. Fedder Corp.
Rochester Institute of Technology
Rochester Museum & Science Center
Sentry Group
Tambe Electric Corp
The Garland Company
The Raytec group
Thermo Fisher Scientific

Tremco
UltraFab
University of Rochester
Upstate Roofing and Painting
VanHook Service Co., Inc.
VJ Stanley
Xerox Corporation
YMCA of Greater Rochester

2015-2016 TOUR/MEETING SCHEDULE	
September	Clam Bake/Pig Roast
October	East Irondequoit Co-Generation Plant
November	Earth Link Data Cloud Center
December	Wine/Beer Tour/Holiday Gathering
January	RMSC Scholarship Night
February	George Eastman House
March	Sibly Building
April	Lidestri New Plant
May	Gray Cliff Bus Tour
June	Scholarship Golf Outing

History of AFE Chapter 21 Tours

(Does not include Seminars & Workshops)

Date	Tour Location	Date	Tour Location
Oct-94	Hemlock Water Filtration Plant	Oct-05	Cadbury Schweppes-Motts
Dec-94	RG&E New Operations Center	Nov-05	RIT's Field House
Apr-95	Delco Lyell Avenue Plant	Dec-05	U of R Power Plant
May-95	Wegman's Cold Storage Plant	Jan-06	Presentation / RMSC
Sep-95	Bausch&Lomb Office Building	Feb-06	Xerox 209 Boiler house
Nov-95	Flower City Tissue	Mar-06	Van Lear Waste Water Plant
Jan-96	Rochester 911 Center	Apr-06	High Falls Brewery
Mar-96	GRC Communications	Oct-06	O'Rourke Bridge
May-96	RG&E Russell Station	Nov-06	Kraft Foods
Oct-96	Canandaigua Winery	Dec-06	George Eastman House
Nov-96	Kraft General Foods - Avon	Feb-07	Greece Athena School
Jan-97	Genesee Brewing Company	Mar-07	Strong National Museum of Play
Feb-97	Kayex Mfg.	Apr-07	Springwater Sprouts
Mar-97	Case-Hoyt	May-07	UR Optics Center
Apr-97	Gannett Printing	Oct-08	Zoto's International - Geneva
Oct-97	Medeva Pharmaceuticals	Nov-08	Custom Brewcrafter - Honeoye Falls
Nov-97	Cantisano Foods	Dec-08	Northern Development Biodeisel - Ontario
Jan-98	Penfield High School Cogen Plant	Feb-09	Gettinge - Henrietta
Mar-98	RIT Microelectronics School	Mar-09	Barilla Pasta Plant - Avon
Apr-98	Sithe IPP Power Plant	Apr-09	RIT Boiler/Chiller Plants
May-98	Frontier Field	May-09	Genesee Country Museum
Oct-98	Casa Laga Winery	Oct-09	Xerox Toner Building
Nov-98	Trident Precision Mfg.	Nov-09	Sweetners Plus - Lakeville
Dec-98	Lightning Mixer	Dec-09	Westside YMCS - Specialty Tool
Jan-99	Blue Cross Arena	Feb-10	Gleason Works
Feb-99	Delphi Lexington Plant	Mar-10	Eastman Theater
Mar-99	Rochester Colonial Mfg.	Apr-10	SunKing Electronics Recycling
Apr-99	Cadbury	May-10	Baldwin Richardson Foods Co.
May-99	Graham Mfg.	Oct-10	Liberty Pump
Oct-99	U of R Medical Center	Nov-10	Mercy Flight
Nov-99	Johnson & Johnson Clinical	Dec-10	Gorbel, Inc.
Dec-99	U of R Laser Lab	Feb-10	University of Rochester
Feb-00	Blue Cross Building	Mar-10	Sentry Safe
Apr-00	US Gypsum	Apr-10	RIT - CIMS Building
May-00	Mt. Morris Dam	May-10	Rohrbach's Brewery
Dec-00	Cantisano Foods	Oct-11	Hyatt Regency Hotel
Jan-01	Red Cross Blood Services	Nov-11	Monroe County Jail
Mar-01	Wegman's Fresh Foods	Dec-11	Strong Memorial Hospital
Nov-01	Sentry Group	Feb-12	Geva Theatre
Feb-02	Harbec Plastics	Apr-12	Monroe County Crime Lab
Mar-02	Public Safety Training Facility	May-12	Darwin Martin House
May-02	Heidelberg Press	Oct-12	Klein Steel
Oct-02	NYSERDA	Nov-12	Universalist Church
Nov-02	Sentry group	Dec-12	Genesee Brewery and Pub
Dec-02	American Express	Feb-13	Rochester Airport Marriott
Mar-03	Monroe County Public Safety Building	Mar-13	SUNY Brockport SERC Building
Apr-03	Exxon Mobil Films	Apr-13	Sheet Metal Workers Local 46 Trg Ctr
May-03	Heidelberg	May-13	Seneca Park Zoo - Rocky Coast Exhibits
Oct-03	St. Ann's Power Plant	Oct-13	Finger Lakes Technology Group, Inc.
Dec-03	Richardson Foods	Nov-13	Optimation Industrial Services
Feb-04	High Fall Brewery	Dec-13	RP Fedder Corporation
Mar-04	Maid Stone Coffee	Feb-14	RIT - Golisano Institute for Sustainability
Apr-04	Tyco Plastics	Mar-14	FLCC Instrumentation & Controls Program
May-04	Guardian Glass	Apr-14	Constellation Brands - Canandaigua Winery
Oct-04	Canadaigua Wine	May-14	Nazareth College - Peckham Hall
Nov-04	Pactiv	Oct-14	Calvary Automation
Dec-04	Gorbel	Nov-14	Lakelands Concrete Products Inc.
Jan-05	RDDC @ RMSC	Dec-14	Harbec Plastics
Feb-05	Nalge	Feb-15	Rochester Amerks Hockey Night & Tour
Mar-05	Infotonics	Mar-15	Lidestri Foods - Spirits
Apr-05	Strong Museum	Apr-15	Eastside Family YMCA
May-05	Trident	May-15	RTS Bus Terminal

Available Certifications

For over thirty years AFE's certification programs have been the standard for an ever-evolving industry. Today, AFE manages and maintains three certification programs: Certified Plant Engineer (CPE), Certified Plant Supervisor (CPS), the Certified Professional Maintenance Manager (CPMM). Also, introducing in 2012, the Government Operator of High Performance Buildings (GOHP) training and certification program. It is a collaboration with the Association of Energy Engineers (AEE) and is an expansion of existing industry recognized training programs. Each certification is designed to create an efficient staff that is ahead of the industry curve and ready to work toward a higher goal.

CPMM

With the wide assortment training fields covered by our Certified Professional Maintenance Manager (CPMM) program, you can rest assured that your staff will be able to produce at the highest level. Topics include: Preventative Maintenance, Work Flow-Planning and Scheduling, Computerized Maintenance, Investment Returns, and Total Productive Management to name a few. The CPMM shows a mastering of current teachings and a desire to learn as new methods are developed.

CPE

Self-improvement is always in season. So take time now to enroll in something that will help you to be a more successful facility professional year-round and in any weather: AFE's Certified Plant Engineer (CPE) program. CPEs are filled with success stories of job promotions, substantial pay raises and exciting new career opportunities as a direct result of becoming a AFE certified. There is simply no better way to demonstrate your expertise in all areas of plant/facilities engineering than by becoming a CPE.

Virtual CPE classes are an extended review of the material in the CPE Review Pack, and provide double the instruction time of the week long classroom review. The review takes place over a longer period of time, allowing working professionals to dedicate the appropriate time to prepare.

CPS

Learn. Lead. Influence. Are you ready to become a leader? If you are a new supervisor or want to take the next step in your career, get the certification that demonstrates your skill and preparation for supervision and management: the Certified Plant Supervisor (CPS). AFE offers CPS preparation courses online in a real-time, interactive setting and now in person in a classroom setting.

CFEA

The Facility Energy Analyst, or FEA, is an exclusive AFE platform; that uses a Department of Energy program for Energy Charting and Metrics or ECAM+ as the main component for the Certified Facility Energy Analyst lab program. All facilities conduct energy audits within their respective buildings. However, what's next? How do we monitor and maintain the corrections we have made from the audits we have conducted? How do we even know what to correct? Facility professionals need a way to conduct a check-up of their building(s), whether monthly, quarterly, annually or anytime.

ECAM+ is a Microsoft Excel-based tool that facilitates the examination of energy information from buildings, and ultimately reduces the time spent analyzing utility meter data and system operational data. Designed for Building Owners, Energy Managers, Energy Consultants, Facility Managers, and Energy Efficiency Program Managers, ECAM+ is public domain software that you can download and use at no cost. Simply register on the AFE website, and we will provide free access to the software, user guides, and data import specifications.

ECAM+ (Energy Charting and Metrics) makes extensive use of Excel pivot tables. Some key features of ECAM+ include:

- Creation of charts to help re-tuning
- Creation of schedules and day-type information to time series data
- Filtering data from months, years, days, day-type, day of week, day of month, occupancy, temperature binned weather data, pre/post comparisons after retrofits or retro-commissioning; normalizing data
- Creating metrics based on consumption or equipment; and the creation of various load profiles or scatter charts for data selected by the user.

Benefits of AFE Membership

Networking

Our members tell us that one of the most valuable benefits of belonging to AFE is the ability to network with others in the profession. Becoming involved in AFE pays off when you need it most. As a member of AFE you'll be able to solve problems and find answers to technical problems through a number of networking avenues.

Chapters

Join a local chapter and network with other professionals in the facilities industry. Local chapters provide programming to specifically meet the local facilities communities' needs. Plant tours are frequently scheduled to view for yourself what others in your community are implementing as best practices. Speakers bring a local perspective to topics of interest in your area. And of course, by meeting with others in your area you'll build a personal and professional network of contacts and friends who will be there when you need help. Here's only one example of how networking with AFE paid off for an AFE member - Jim Dolan, PE, who recently wrote to us.

Member to Member Directory

Need to find someone with some specific expertise? Log on to the members-only area at afe.org and look up another member who can help you. Want to provide help for others? They'll find you here.

Career Advancement

Certification

Did you know that by becoming a Certified Professional Maintenance Manager (CPMM), Certified Plant Engineer (CPE) or Certified Plant Supervisor (CPS), you could earn up to \$11,000 more a year than your co-workers without certification? It's true. Our research has shown that members demonstrating knowledge with AFE's certification programs earn more than those without certification. For more information on the CPE, CPMM or CPS programs, click on the program name.

Learning For professional or personal growth, AFE offers members discounts on educational events tailored to your needs. And AFE makes it easy for you with on-line classes. [Click here](#) for more information about your professional development with AFE.

AFE Career Center

Looking for a job? Looking for an employee? Here's the marketplace for facilities experts to find employment opportunities. [Click here](#) to post your personal career profile or open position.

Webinars

Timely information on trends, topics, and/or technology all in bite-size time formats of 60 minutes each. They're just the key to fill the educational void of the overly busy plant/facilities professional. These live seminars are jam-packed with useful information for the engineering, operations, and/or maintenance professional, and those who want to work more effectively with related personnel. Miss a live webinar? Don't Worry. Each live webinar is recorded for future member download. All programs and downloads are FREE to members.

Information

AFE Facilities Engineering Journal

Members receive this highly regarded, information-packed magazine six times a year. Members have access to the online archive of articles from the past issues of the Journal.

Web

Your 24/7 portal to the facilities engineering world. Members have access to the members-only area for exclusive information, services, and links to what you want to know.

Build Leadership Skills

Professional and Personal Skill Building

Members who become involved in AFE leadership positions have the opportunity to "spread their wings" by learning new skills. Members can become involved in the local, regional, or national level. Aspire to be president? You can do it with AFE. If president seems too much for you, then serve as a committee chairman to build expertise and leadership skills you can take back to work with you. Click here for local chapter information. Email AFE to volunteer for a leadership position here.

Industry recognition

Get Published

Want to see your name in print? Write an article for the Facilities Engineering Journal.

Captive Audiences

Have some expertise you can share with others? Become a speaker locally or nationally. Work with us to develop a learning experience for others in the facilities industry.

Marketing resources

Reach a select group of facilities practitioners with an ad in the AFE Facilities Engineering Journal or with a banner ad on this web site. Rent our mailing list for your direct marketing efforts. Or promote your company locally through the local chapter bulletin ads and sponsorships.

Association for Facilities Engineering (AFE)

8200 Greensboro Drive, Suite 400, McLean, VA 22102

Phone: (571) 395-8777 | Fax: (571) 766-2142

Email: info@AFE.org



Frequently Asked Questions and How to Join

Are there any requirements for membership?

Anyone with an interest in the facilities field can join AFE.

Are there different classifications of membership for vendor members?

No, all individual members are treated equally. Employees of vendor companies are not assessed higher dues than end-user members.

What are AFE dues rates?

New individual members pay \$199 for first-year dues.

My company pays my dues, what happens if I change jobs?

If you joined as an individual member, the membership is held in your name and belongs to you. It does not matter who paid the invoice. If you change jobs, your membership is yours to take with you. Please be sure to let HQ know your new address.

Is there a company or corporate membership?

Yes, AFE offers a Corporate membership. The corporate membership package offers companies the opportunity to own AFE memberships. The Company Membership discount program is designed to give organizations with large numbers of end-users a price break based on volume of membership. The price of membership varies based on the number of employees who will be included in the program. The memberships are transferable under the corporate membership. Corporate membership brochure can be seen [here](#).

I'm a student, can I join?

We encourage and welcome student members. AFE membership is a great way to get started building relationships in the facilities world. And you'll have access to resources to help with your studies.

To join as a student member, you must be enrolled full time in an accredited college or university.

How much are student dues?

Student dues are only \$25 a year.

What does AFE do with my dues?

Your dues go to support the various activities and benefits of AFE membership.

More specifically, \$25 of each member's dues goes to support chapter activities, \$15 goes to support region activities and volunteers. Your dues also pay for the activities of the Board of Directors. Dues support a small headquarters staff to provide individual member service, as well as support chapter, region, and committee activities. Among other HQ activities, we also publish the journal, develop and maintain the web site, provide centralized administrative functions, manage the certification programs, develop, coordinate and provide training and resources, and work with member volunteer committees to bring members new resources for professional advancement.

What benefits do I get for my dues?

AFE membership provides both tangible and intangible benefits.

You get the Facilities Engineering Journal 6 times a year. Free member training webinars. Member-to-member virtual directory. 24/7 access to AFE.org for information. Threaded discussions. Free skills self assessment. Free energy audit for your facility. Employment help. Local networking and plant tours with chapter membership. Free resources such as the Blue Book and Thomas Register. And savings on shipping, industry events, training and education, books, energy, legal services, car rental, insurance programs, and more. We are

always adding new benefits for members.

There are additional benefits that aren't as tangible, such as the ability to become involved in AFE leadership and build new skills. You'll make new friends. You'll find resources you wouldn't have otherwise. You'll network to increase your knowledge, find solutions, get answers, and advance your career.

I just lost my job, do I get a break on my dues?

We know that AFE membership can help you locate a new position, so we don't want to deprive you of our valuable resources when you need them the most. If you lose your job, don't worry about your membership — give us a call at Headquarters and we'll extend your membership for the period of your unemployment in six-month increments for a maximum of 18 months.

I just retired, are my dues the same?

When you retire your dues drop to \$80 a year. But, be sure to let us know that you have retired.

Is there ever a point when I don't have to pay dues and can still be a member?

Yes, after 30 years of continuous membership you reach Life Member status and no longer pay membership dues.

Can AFE help me with a job search?

Yes, you can post an anonymous resume on AFE Career Center. You can browse the openings and apply online.

How do I become more involved as a volunteer member?

That's easy, simply let AFE headquarters know you're interested in becoming more involved and we'll send you the volunteer application. Or go online and complete the volunteer information application.

Are there requirements for AFE volunteer leadership?

A commitment to seeing the organization thrive, along with the willingness and ability to make time, financial, and talent commitments. The most important thing to remember when you volunteer to do something in any organization is that others are relying on you to honor your commitments.

How can AFE help me and my company?

When you join AFE you'll have access to a variety of benefits and resources to improve your job performance. Your company benefits by having a knowledgeable employee for more efficient and effective facility operations. Your company also saves time and money on training with benefits such as free webinars, AFE brings the training to you, saving time and expense.

I have a product to sell to facilities professionals, how can AFE help me?

Membership in AFE isn't a requirement to advertise in the Facilities Engineering Journal or on the AFE web site, or to buy the AFE mailing list. But it's with membership that you can create the personal connection with members and generate referral business on a local and national level.

How much are dues for Young Professional Members?

Young Members dues are \$95 annually.

Do Young Professional Members receive the same benefits as regular members?

YPM (Young Professional Members) have all the same membership benefits as full members, but with added incentives to make this your strongest possible career move into facilities engineering.

TO JOIN GO TO AFE.ORG SELECT JOIN AFE AND FOLLOW THE INSTRUCTIONS (paper applications are no longer available)